



# Mountain Pacific

INNOVATING BETTER HEALTH

# Infection Prevention and Control

Crystal Morse, MSHSA, CSW, CCM  
Project Firstline Senior Account Manager  
Mountain Pacific



# Project Firstline

**Center for Disease Control and Prevention (CDC)'s National  
Training Collaborative  
for Health Care Infection Prevention and Control  
[#WeAreFirstline](#)**



# Objectives

---

- Defining the concepts of Project Firstline
- Cost measures and financial impact
- Learning Needs Assessment (LNA)
  - Systematic process
  - Gap analysis
  - Skill level and confidence
  - Training development
- Gamification and AI in infection control

# The Vision of Project Firstline

---

- Infection control training collaborative.
- User-centered effort in learning; designed for the needs of a busy workforce.
- U.S. health care and public workforce understands infection control and prevention rationale.
- Culture of interactive infection control training and education flourishes in all health care settings.
- Improved national ability to fight all infectious disease threats.

# Program Overview



“Project Firstline training content is designed to **make infection prevention a way of life**, providing the latest science and understanding that will **empower every health care worker** to be an infection control leader on their team.”

Michael Bell, MD, Deputy Director  
CDC Division of Health Care Quality Promotion

# Meet the Project Firstline Team

---

- **Clayton Weingartner, MPH, HAI/AR**  
Program Manager  
Alaska Department of Health
- **Rebecca Hamel, RN, MHI, CIC**  
Infection Preventionist, HAI/AR Program  
Alaska Department of Health
- **Crystal Morse, MSHSA**  
Project Firstline Senior Account Manager  
Mountain Pacific
- **Kelley O'Leary, RN, MSN CIC**  
Infection Prevention Consulting Services, LLC.

# Data Sources

---

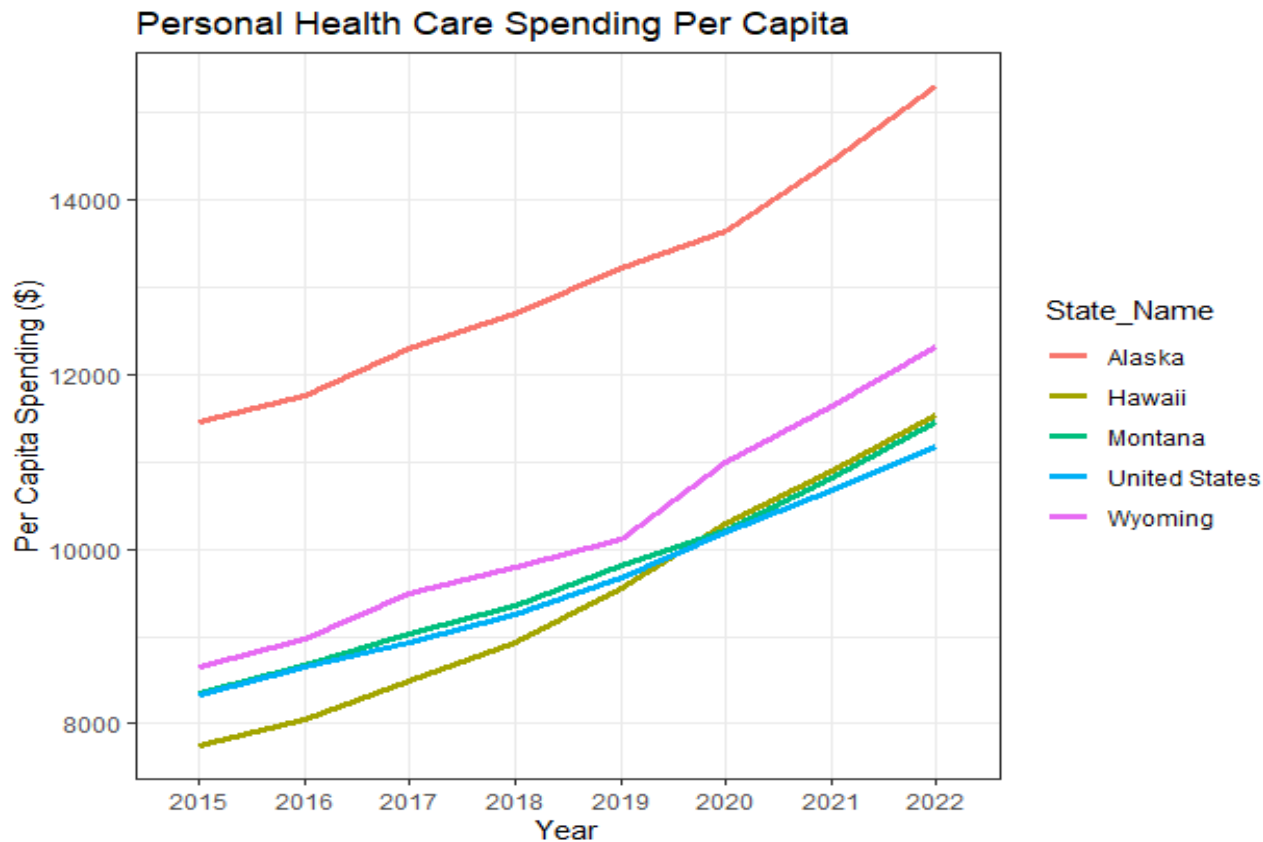
- Medicare claims
  - Part A (Inpatient), Beneficiary Information on the Cloud (BIC)
- Five years: January 1, 2019 – December 31, 2023
- Medicare Fee-for-Service (FFS) beneficiaries in:
  - Montana, Wyoming, Alaska, Hawaii and the Pacific Islands
- Centers for Medicare & Medicaid Services (CMS) National Health Expenditure Data
  - Per-capita spending levels by category
  - <https://www.cms.gov/data-research/statistics-trends-and-reports/national-health-expenditure-data>

# The importance of an Infection Preventionist: Cost per Infection

|               | Number of Claims<br>CY2023 | Medicare Payments<br>CY2023 | Cost Per Infection |
|---------------|----------------------------|-----------------------------|--------------------|
| <b>Alaska</b> | <b>2197</b>                | <b>\$65,185,242</b>         | <b>\$29,670</b>    |
| Hawaii        | 2327                       | \$70,669,764                | \$30,369           |
| Montana       | 3222                       | \$87,546,483                | \$27,171           |
| Wyoming       | 1690                       | \$42,773,649                | \$25,310           |
| Region        | 9436                       | \$266,175,138               | \$28,208           |

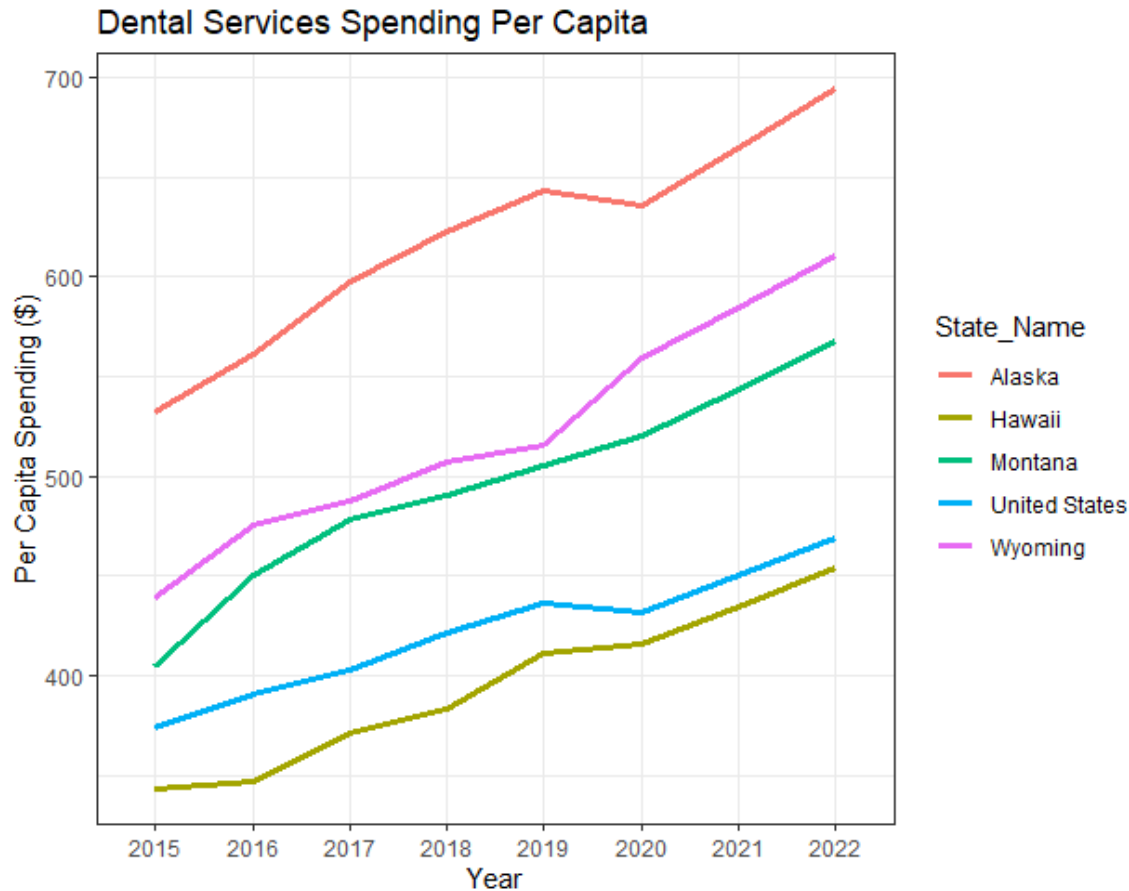


# Rising Cost of Care: Overall Cost



U.S. Average Annual  
Growth Rate: **4.7%**

# Rising Cost of Care: Dental Services



U.S. Average Annual Growth Rate: **4.2%**

# Quality Improvement Without Measurement is Guessing

## Learning Needs Assessment

- Supported by CDC, Project Firstline
- Highlight and ensure training needs are meeting the needs of the demographics of health care workers.
- Identify infection control challenges and training needs.

## Why

- Collect experiences and confidence to effectively implement infection control trainings.
- Anonymously share honest feedback with infection control.
- Capitalize on existing knowledge and experience.

## Who

- All health care workers regardless of workplace or role.

# Table 1: Which of the following best describes your role?

| Occupation                     | Count | Percentage |
|--------------------------------|-------|------------|
| Registered nurse (RN)          | 123   | 42.1%      |
| Other                          | 31    | 10.6%      |
| Physician                      | 23    | 7.9%       |
| Infection Preventionist        | 17    | 5.8%       |
| Administrator                  | 14    | 4.8%       |
| Nurse practitioner             | 14    | 4.8%       |
| Physical Therapist             | 12    | 4.1%       |
| Social services                | 12    | 4.1%       |
| Environmental services         | 9     | 3.1%       |
| Dental health professional     | 8     | 2.7%       |
| Non-clinical support staff     | 8     | 2.7%       |
| Technician                     | 8     | 2.7%       |
| Licensed practical nurse (LPN) | 7     | 2.4%       |
| Nursing assistant              | 6     | 2.1%       |

## Table 2: Which of the following best describes your primary workplace?

| Primary Workplace                            | Count | Percentage |
|--|-------|------------|
| Other  | 86    | 29.5%      |
| Acute Care Hospital (ACH)                    | 79    | 27.1%      |
| Alaska Tribal Health Systems (ATHS) Facility | 34    | 11.6%      |
| Critical Access Hospital (CAH)               | 30    | 10.3%      |
| State or Local Health Department             | 23    | 7.9%       |
| Nursing Home or Long-Term Care (LTC)         | 21    | 7.2%       |
| Not Reported                                 | 8     | 2.7%       |
| Assisted Living Home (ALH)                   | 6     | 2.1%       |
| Long-Term Acute Care Hospital (LTAC)         | 5     | 1.7%       |

# Number of Years

Table 3: Number of years practicing in current role

| Time               | Count | Percentage |
|--------------------|-------|------------|
| Less than 1 year   | 29    | 9.9%       |
| 1-5 years          | 54    | 18.5%      |
| 6-10 years         | 63    | 21.6%      |
| More than 10 years | 139   | 47.6%      |
| Not Reported       | 7     | 2.4%       |

Table 4: Number of years working in current facility

| Time               | Count | Percentage |
|--------------------|-------|------------|
| Less than 1 year   | 42    | 14.4%      |
| 1-5 years          | 98    | 33.6%      |
| 6-10 years         | 63    | 21.6%      |
| More than 10 years | 89    | 30.5%      |

# Preferred Learning Style

Table 6: What format do you prefer for learning?

| Preferred Learning Format                    | Count | Percentage |
|--|-------|------------|
| Self-paced learning                          | 174   | 20%        |
| Virtual learning platform                    | 164   | 18.9%      |
| In person                                    | 156   | 18%        |
| Interactive discussion with an expert        | 153   | 17.6%      |
| Interactive discussion with a group of peers | 112   | 12.9%      |
| Listening to a lecture                       | 107   | 12.3%      |
| Other  | 2     | 0.2%       |

# Read the Label It's the Law

Source: <https://www.cdc.gov/project-firstline/media/pdfs/howtoreadalabel-infographic-508.pdf>

## How to Read a Disinfectant Label

**Read the entire label.**  
**The label is the law!**  
Note: Below is an **example** of information that can be found on a disinfectant label

**Active Ingredients:** What are the main disinfecting chemicals?

**EPA Registration Number:** U.S. laws require that all disinfectants be registered with EPA.

**Directions for Use (Instructions for Use):** Where should the disinfectant be used? What germs does the disinfectant kill? What types of surfaces can the disinfectant be used on? How do I properly use the disinfectant?

**Contact Time:** How long does the surface have to stay wet with the disinfectant to kill germs?

**Signal Words (Caution, Warning, Danger):** How risky is this disinfectant if it is swallowed, inhaled, or absorbed through the skin?

**Precautionary Statements:** How do I use this disinfectant safely? Do I need PPE?

**First Aid:** What should I do if I get the disinfectant in my eyes or mouth, on my skin, or if I breathe it in?

**Storage & Disposal:** How should the disinfectant be stored? How should I dispose of expired disinfectant? What should I do with the container?

**Label Content:**

**ACTIVE INGREDIENTS:**  
Alkyl (80% C14, 30% C16, 5% C12, 5% C18) ..... 10.0%  
Dimethyl Benzyl Ammonium Chloride ..... 90.0%  
**OTHER INGREDIENTS:** ..... 100.0%  
**TOTAL:** ..... 100.0%

EPA REG NO. 55555-55-55555

**CAUTION**

**Directions for Use**

**INSTRUCTIONS FOR USE:**  
It is a violation of Federal law to use this product in a manner inconsistent with its labeling.

**For Disinfection of Healthcare Organisms:**  
Staphylococcus aureus, Pseudomonas aeruginosa.

**To Disinfect Hard, Nonporous Surfaces:**  
Pre-wash surface.  
Mop or wipe with disinfectant solution.  
Allow solution to stay wet on surface for at least 10 minutes.  
Rinse well and air dry.

**PRECAUTIONARY STATEMENTS:**  
Hazardous to humans and domestic animals. Wear gloves and eye protection.

**CAUSES MODERATE EYE IRRITATION.** Avoid contact with eyes, skin or clothing. Wash thoroughly with soap and water after handling. Avoid contact with foods.

**FIRST AID: IF IN EYES:** Hold eye open and rinse slowly and gently with water for 15-20 minutes. Remove contact lenses, if present, after the first 5 minutes, then continue rinsing eye. **IF ON SKIN OR CLOTHING:** Take off contaminated clothing. Rinse skin immediately with plenty of water for 15-20 minutes.

**POISON CONTROL:** Call a Poison Control Center (1-866-368-5048) or doctor for treatment advice.

**STORAGE AND DISPOSAL:** Store this product in a cool, dry area away from direct sunlight and heat. When not in use keep center cap of lid closed to prevent moisture loss. Nonrefillable container. Do not reuse or refill this container.

EXP MM-DD-YYYY  
5 55555 55555 5



# Project Firstline Cleaning and Disinfection

**Introducing...**

**AN INTERACTIVE  
ANIMATED  
TRAINING GAME!**

**How to Read a  
Disinfectant Label  
with Donna:**

**Test your skills and improve  
your knowledge in a fun and  
memorable way.**



**Designed for Everyone:**

- ✓ Perfect for individuals and teams alike
- ✓ Suitable for all levels of expertise

**Play Anytime, Anywhere:**

- ✓ Available 24/7 for on-the-go learning
- ✓ Play now and level up your disinfection game in less than 10 minutes!

**Read the entire label.  
The label is the law!**



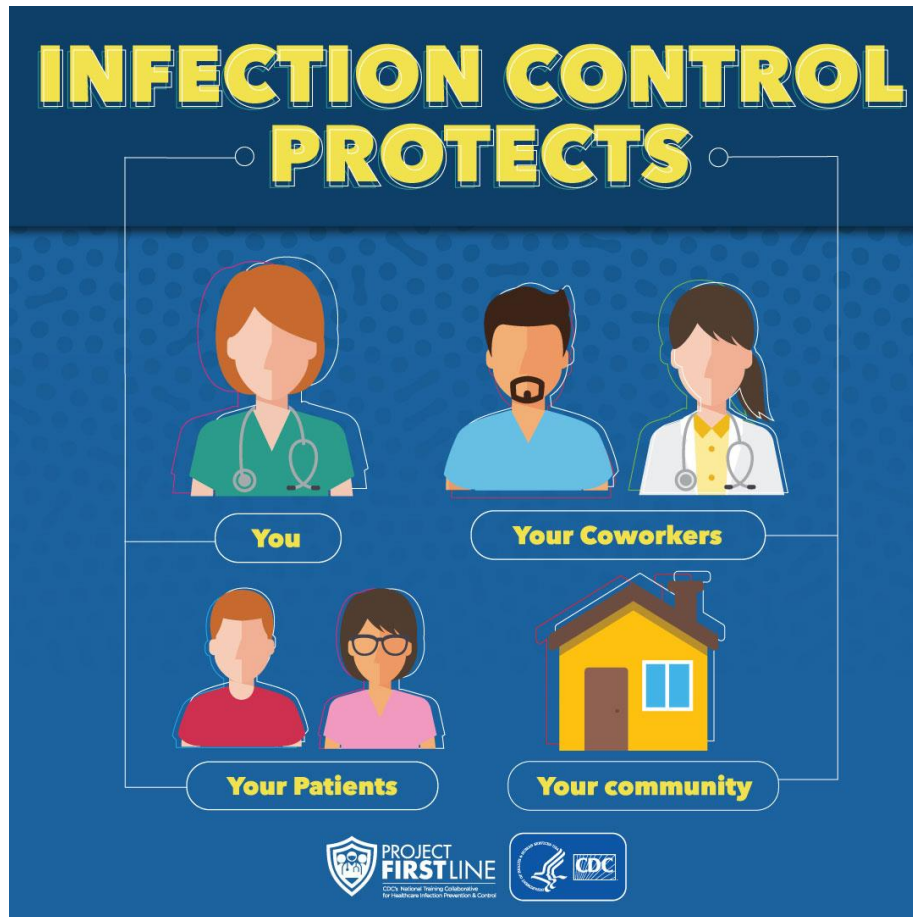
Scan the code or visit <https://near-life.io/share/t/760/p/1699/s/3677/g/3677> to play the game.



# Meet Donna



# Upcoming PFL Trainings



- Micro Learns- Moodle
- Pre-recorded
- Asynchronous
- 15 minutes
- Monthly
- Modules can be taken and then uploaded to health care facility HealthStream for internal training.
- Continuing Education Credits

# Join Us: Alaska PFL Power Lunch Training Series



- Monthly
- 30 Minutes
- Collaborative
- Learning Content is CDC approved
- Interactive and Engaging with experts
- Inclusive and open to ALL disciplines
- Continuing Education Credits



# 2024 International Infection Prevention Week (IIPW)

---

## "Moving the Needle on Infection Prevention" | October 13 – 19, 2024

### IIPW Quick Links:

- [IIPW Schedule](#)
- [Infographics](#)
- [Logos and Graphics](#)
- [NEW! Moving the Needle Daily Content](#)
- [NEW! Ready to Use Build-A-Bug Activity](#)

### Source:

[https://infectionpreventionandyou.org/iipw/?utm\\_source=newsletter&utm\\_medium=email&utm\\_content=International%20Infection%20Prevent%22Moving%20the%20Needle%20on%20Infection%20Prevention%22%20|%20October%2013%20%E2%80%93%2019,%202024ion%20Week&utm\\_campaign=EDU%20%7C%20Education%20Now%2010\\_10](https://infectionpreventionandyou.org/iipw/?utm_source=newsletter&utm_medium=email&utm_content=International%20Infection%20Prevent%22Moving%20the%20Needle%20on%20Infection%20Prevention%22%20|%20October%2013%20%E2%80%93%2019,%202024ion%20Week&utm_campaign=EDU%20%7C%20Education%20Now%2010_10)



# Mountain Pacific

INNOVATING BETTER HEALTH

# Thank you!